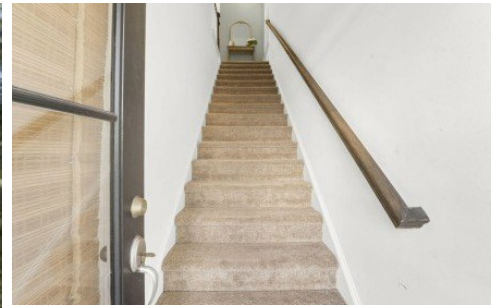


**1265 Allusion Ln**  
Mount Pleasant, SC 29466



Powered by [homes.postandcourier.com](https://homes.postandcourier.com)

MLS# 26015720



**\$382,500**

**2 Bedrooms | 2.5 Bathrooms | 1,036 Sqft**

Workforce Housing - opportunity to own this like new townhome in Mount Pleasant at this pricepoint with max salary of \$94K for 1-4 Family mbrs. This spacious end-unit, townhome-style condominium offers exceptional value in one of the most convenient locations. This thoughtfully designed 2Bed/2.5Ba home features a versatile flex space on the garage level, perfect for a home office, fitness room, hobby space, or future expansion. The main living level showcases 9-foot ceilings, luxury vinyl plank flooring, & an open-concept design ideal for everyday living and entertaining. The kitchen features granite countertops, stainless steel appliances, 42-inch white cabinetry, a breakfast bar, and a dining area that flows seamlessly into the spacious family room. Upstairs, both generously sized bedrooms offer private en-suite baths. The primary suite includes a walk-in tiled shower, while the secondary bedroom features a tub/shower combination. Additional highlights include an attached garage, ample storage, and a location directly next to the neighborhood dog park. Situated just off Highway 17 and across from Oakland Market, you'll enjoy easy access to shopping, dining, healthcare, Costco, top-rated schools, and Mount Pleasant's beautiful beaches. Low regime fees and easy to show. This home is part of a workforce housing program and is subject to



**Bobette Fisher**  
Phone: (843) 224-6375  
Carolina One

For full listing details, please scan:

