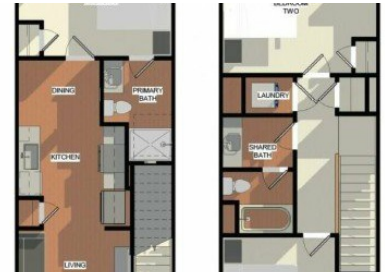


1539 Bountiful Bend
Mount Pleasant, SC 29466



Powered by homes.postandcourier.com

MLS# 26013360



\$379,900

3 Bedrooms | 2 Bathrooms | 1,029 Sqft

Welcome to Attainable Housing in Carolina Park! Nestled within the friendly confines of one of the Lowcountry's premier master planned communities, The Towns at Carolina Park, represents a tremendous home ownership opportunity. In this attainable housing community will be one hundred new 3-bedroom townhome style homes will be built just steps away from award-winning public schools, a 40,000 square-foot public library, a full-service hospital, fire and police stations, big-box retailers and a growing number of shops, restaurants and services. This floor plan is the 1029SF Bently Plan and includes 3 bedrooms and 2 full bathrooms. The first level includes living areas with LVP, a kitchen with granite countertops, stainless steel appliances, and a subway tile backsplash, a dining room, and a primary suite with 2 closets and a primary bathroom featuring a walk-in shower. Upstairs are 2 bedrooms, a hall bath with quartz countertops and a tub/shower combination, a laundry room and pull down stairs to the attic space. Residents will be able to enjoy a tot lot, hammock garden and bark park. To purchase a home at The Towns at Carolina Park, buyers must meet both mortgage qualification requirements and income eligibility guidelines dictated by a non-profit SC company that helps local individuals and families achieve financial and



Patty Lynn Connell
Phone: (843) 754-9866
Carolina One

For full listing details, please scan:

