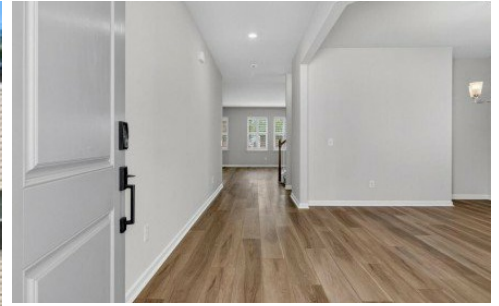


569 Yellow Leaf Ln
Summerville, SC 29486



Powered by homes.postandcourier.com

MLS# 26012401



\$475,000

5 Bedrooms | 3.5 Bathrooms | 3,000 Sqft

Beautiful and better-than-new home in Lindera Preserve offers nearly 3,000 sq ft of thoughtfully designed living space. The open-concept layout features a private office with french doors, formal dining room, and a bright living area that flows into a well-appointed kitchen with a massive granite island seating six. All appliances convey, including a premium stainless refrigerator. Step outside to a screened porch overlooking a large, fenced backyard with a serene wooded buffer for added privacy. Upstairs includes four spacious bedrooms plus a 23' x 12' bonus room that can serve as a fifth bedroom, along with 3 full baths and a convenient laundry room with a 2024 LG washer and dryer set. The rear facing owner's suite offers a walk-in shower, dual vanities, private water closet, and large walk-in closet. Additional highlights of the home include an epoxy-finished garage with workshop features already in place, a secret built in storage space under the staircase, and a pull down attic access. The large front porch features enhanced landscaping and another spot to enjoy morning coffee or an evening chat. Located in Cane Bay Plantation, Lindera Preserve offers top-tier amenities including two pools, parks, dog park, miles of walking and biking trails, and community events. Other nearby amenities include the YMCA, Berkeley Country Library, grocery



Sybil Hill
Phone: (843) 834-6234
Carolina One

For full listing details, please scan:

