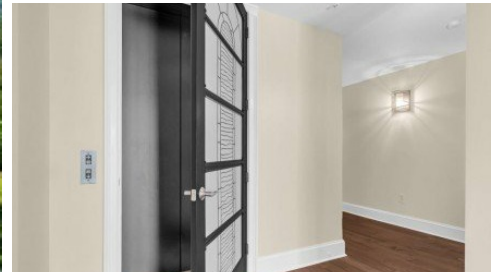
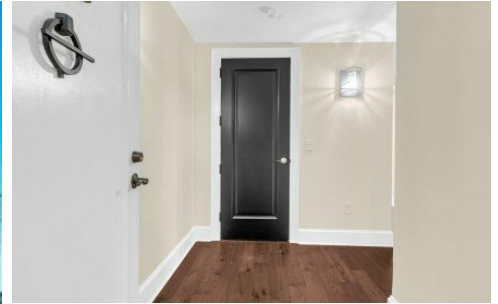


222 S Plaza Ct
Mount Pleasant, SC 29464



Powered by homes.postandcourier.com

MLS# 26006278



\$1,875,000

3 Bedrooms | 2.5 Bathrooms | 2,066 Sqft

Welcome Home to this beautifully renovated condo at The Renaissance on Charleston Harbor, featuring breathtaking views of the Cooper River, Ravenel Bridge, and Charleston skyline from the second floor. Perfectly positioned on the Plaza Level (the second floor), this 3-bedroom, 2.5-bath unit blends timeless elegance with modern luxury. A semi-private elevator opens directly into the residence, revealing an open floor plan with curated designer lighting, custom finishes, and exquisite craftsmanship throughout. The chef's kitchen is a showpiece, featuring Thermador appliances, sleek custom cabinetry, a wine cooler, and a center island--ideal for entertaining. An electric fireplace warms the living area, which opens to a covered terrace extending the length of the condo and is accessible from the living room, dining area, and primary bedroom--perfect for enjoying Charleston's harbor breezes, sunset views, and steeples in Historic Charleston. The living room is also open to the dining area and kitchen, making it easy to live and entertain. The spacious primary suite features dual walk-in closets and a spa-inspired bath, complete with a soaking tub, towel warmer, walk-in shower, and double vanities. The second bedroom features an en-suite bathroom with a walk-in shower. The third bedroom also makes the



Stephanie Wilson-Hartzog

Phone: (843) 364-1386

Carolina One

For full listing details, please scan:

