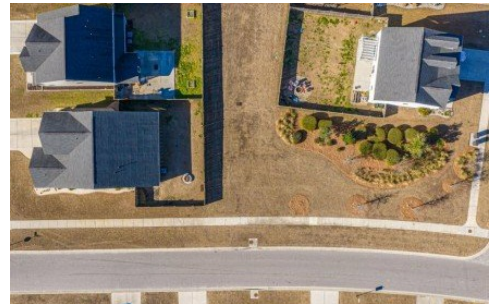


226 Firewheel Ct
Summerville, SC 29486



Powered by homes.postandcourier.com

MLS# 26002743



\$425,000

4 Bedrooms | 3 Bathrooms | 2,178 Sqft

Welcome home to 226 Firewheel Drive, where thoughtful design meets easy Lowcountry living. Set on a spacious corner lot in the heart of Lindera Preserve, this highly sought-after St. Phillips floor plan offers 2,178 square feet, 4 bedrooms, 3 full baths, and a layout that truly lives well. Step inside and you're greeted by a grand entryway with 9-foot ceilings, drawing you into a home that feels open, bright, and inviting. Two front bedrooms and a full bath sit just off the foyer. The primary suite is located just off the family room for a private retreat. Upstairs, you'll discover a spacious bonus retreat with coffered ceilings, a full bathroom, and a large walk-in closet ideal as a media room, game room, gym, or a private MIL suite tucked away from the main living spaces. Throughout the home, generous closet space and multiple storage closets make staying organized effortless, designed for real life without sacrificing style. The layout flows effortlessly into the heart of the home, where natural light pours through large windows overlooking the backyard. The kitchen is a standout crisp white cabinetry, tile backsplash, stainless steel appliances, a gas range, and abundant cabinetry make it as functional as it is beautiful. A large pantry and a tucked-away workspace nook add everyday convenience, while the designated dining area creates the perfect spot for



Dawn Wilson

Phone: (843) 270-2133

Carolina One

For full listing details, please scan:

