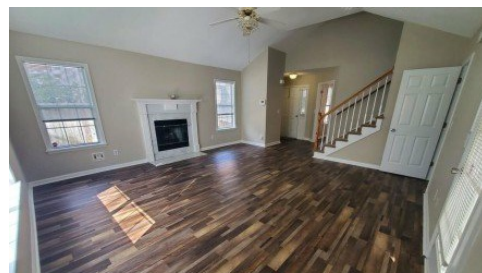


381 Arlington Dr
Charleston, SC 29414



Powered by homes.postandcourier.com

MLS# 26002129



\$515,000

3 Bedrooms | 2.5 Bathrooms | 1,934 Sqft

LOCATION! LOCATION! LOCATION!!! This charming home sits in a quiet, small, waterfront community literally just 10 minutes to historic downtown Charleston and 10 minutes to the Charleston International airport. Home has been freshly painted inside and outside and ready to go! The neighborhood has a small crabbing dock for your enjoyment, as well as located just steps to the West Ashley Greenway. You can walk or bike down the greenway just 4 miles and look across the Ashley River at downtown Charleston. A pedestrian bridge is currently under construction so that you will soon be able to walk/bike to downtown without competing with car traffic!! Home is in very good condition but has been very competitively priced to sell AS IS...no exceptions!!



Frona Bruggemann
Phone: (843) 224-9889
Carolina One

For full listing details, please scan:

